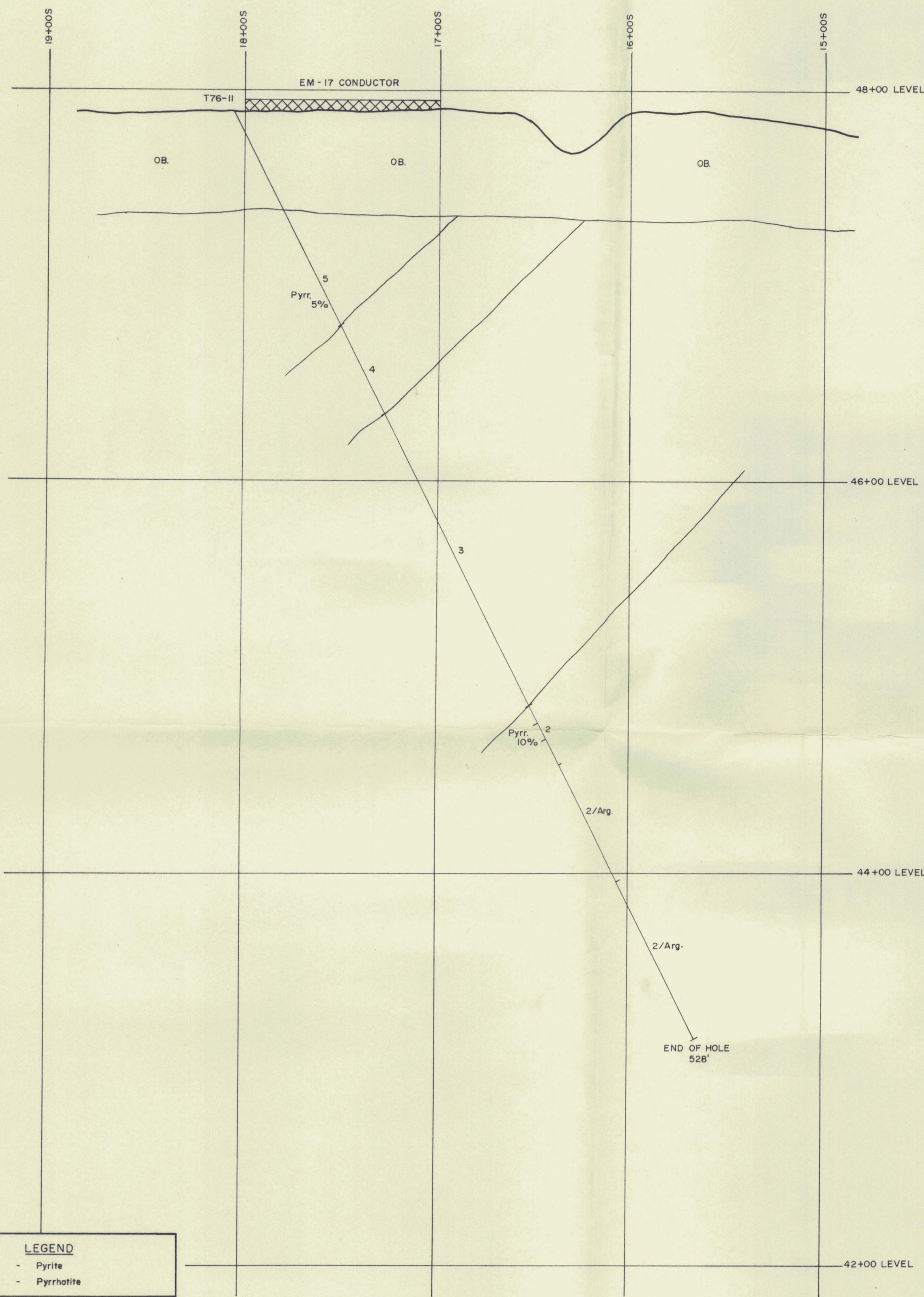
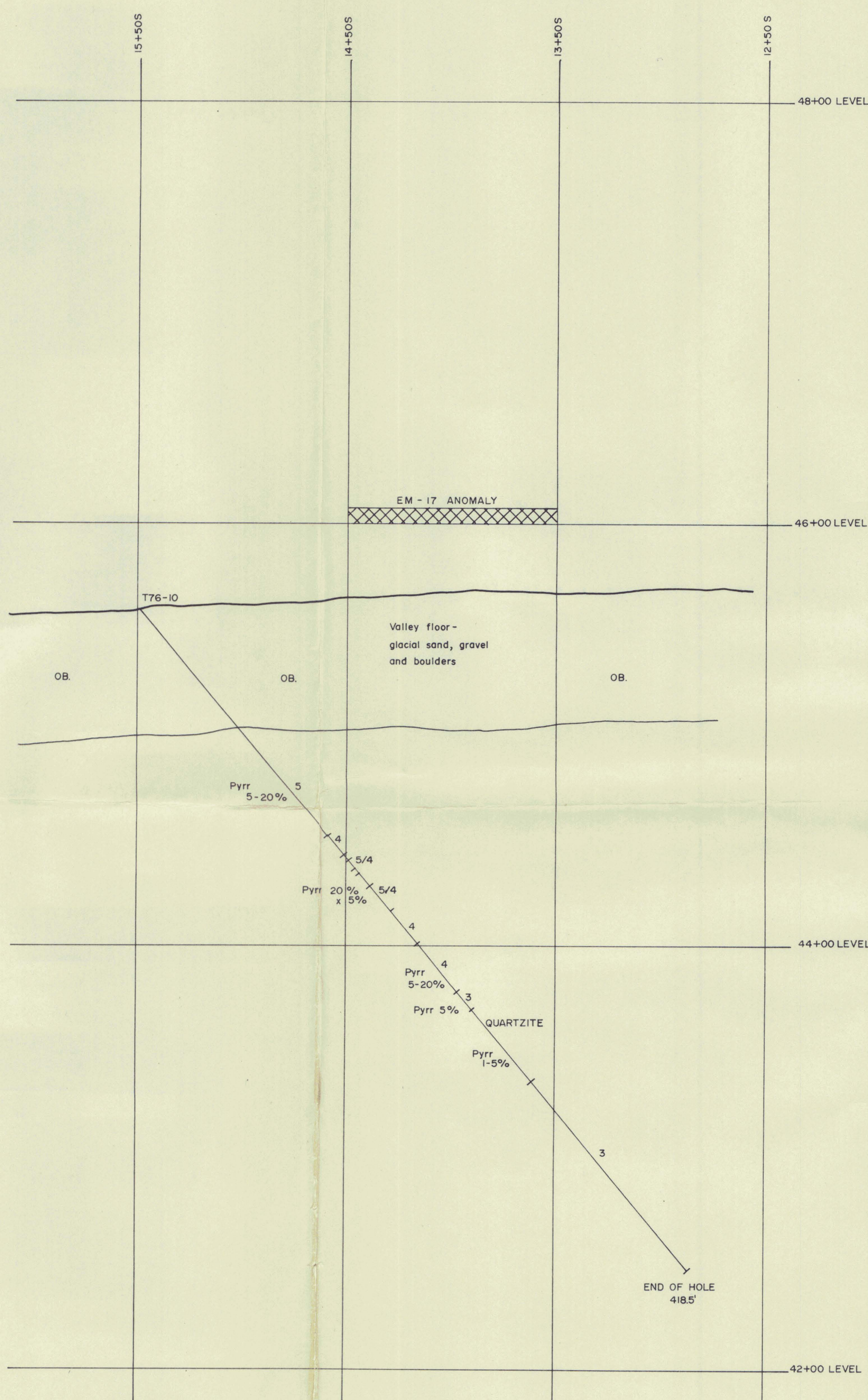


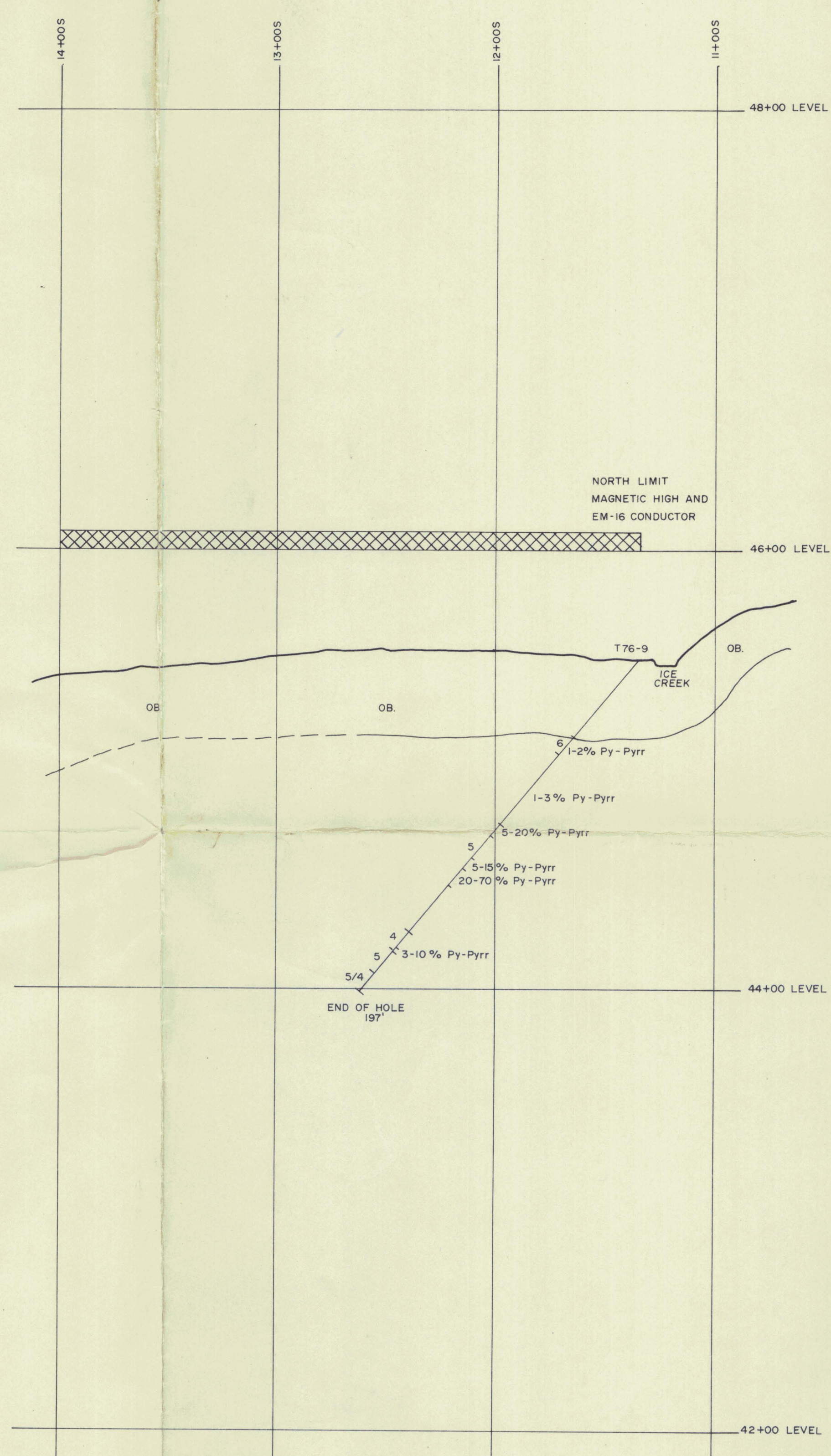
SECTION 24+00W



SECTION 44+00W



SECTION 46+00W



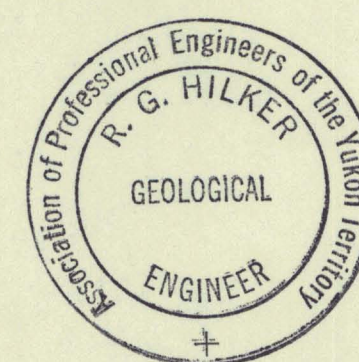
LEGEND

Py - Pyrite
Pyrr - Pyrrhotite

GEOLOGY LEGEND

- PALEOZOIC
CAMBRIAN
TINTINA SERIES
[Symbol] Argillaceous limestone, lime phyllite, hornfels
[Symbol] Black argillite, hornfels
[Symbol] Upper limestone
[Symbol] Middle argillite, hornfels
[Symbol] Lower limestone
[Symbol] Lower argillite, hornfels
[Symbol] Argillite - undifferentiated
[Symbol] Limestone - undifferentiated

R. G. HILKER LTD.
CONSULTING GEOLOGIST
WHITEHORSE, Y.T.



SHEET 105-G-3

TINTINA SILVER MINES LIMITED

DIAMOND DRILL HOLES

T76-9, T76-10 & T76-11

1975 GRID SYSTEM

DATE: JULY 1976

SCALE: 1" = 40 feet

EAGLE 10, 35 & 37

DWG: R.G.H.

(in 1976) Drill Sections plus D.P.H. Eagle 2103537, 4243 105-G-3 1976